

TAAC  
TALLER DE ARQUITECTURA COLECTIVA

+

LIZ

+



Master Plan

PUNTA SAL

CASA  
SAL  
SAL



## INDEX

- 1 . INFORMATION AND LOCATION
  - 2 . SITE ANALYSIS
  - 3 . THE HOTEL
  - 4 . THE RESIDENTIAL
  - 5 . CONSTRUCTION MATERIALS & ARCHITECTURAL COMMITTEE
- SALT MANIFEST



SΔL

LUXURY RESIDENCE, HOTEL & RETREAT

PUERTO ESCONDIDO, OAX



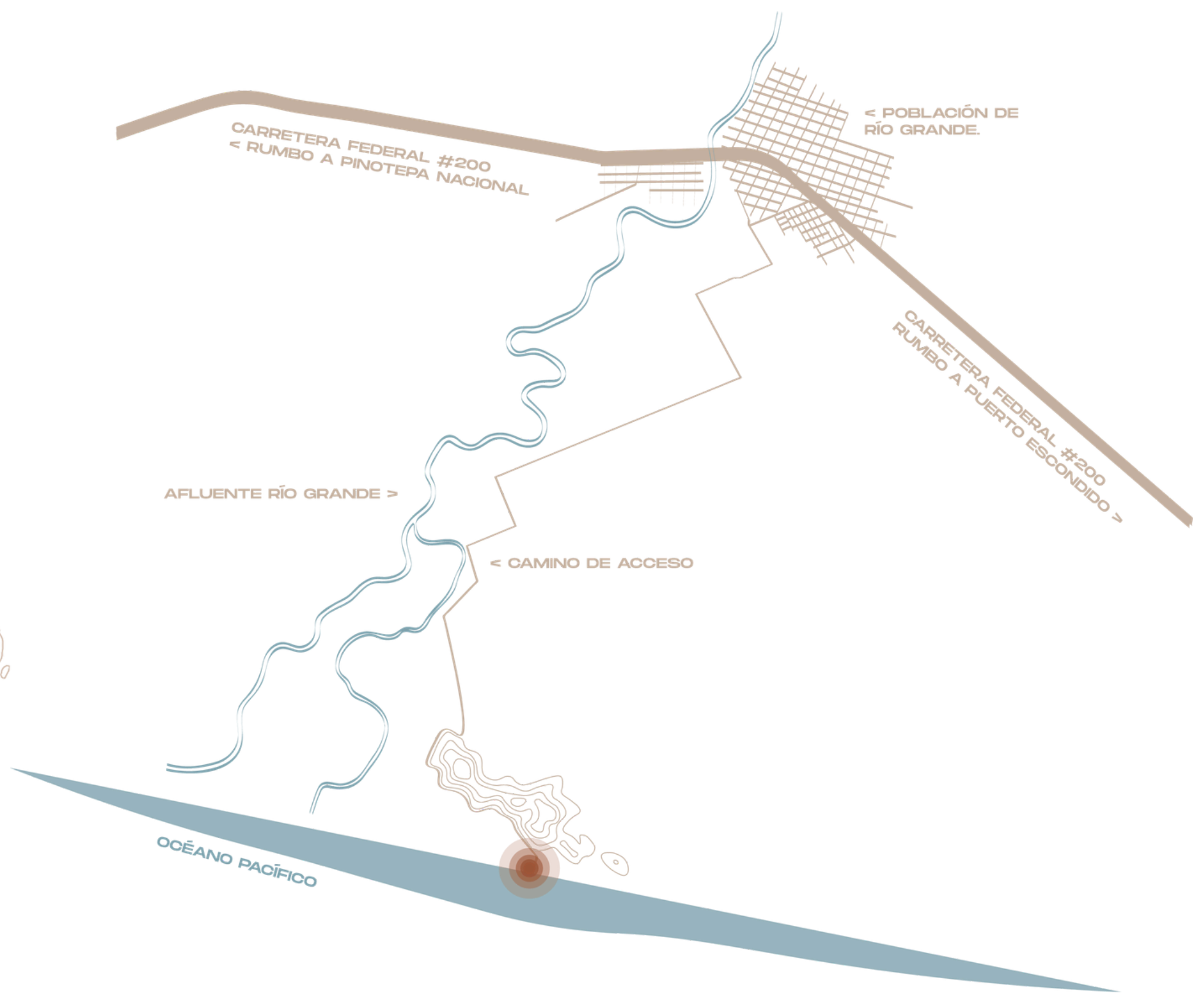
COSTA OXACA

INFORMATION AND LOCATION

SAL PROJECT

# SAL Project

"Give yourself a break on the coasts of Oaxaca, Casa Sal and Punta Sal seek to redefine living in front of the sea and connect with oneself. Spectacular sunsets are just the beginning. The rest of the story unfolds in the spaces that connect us with nature and our interior. "



# Where to...

LOCATION

SAL PROJECT

Punta Sal is 50 min. / 50 kms from Puerto Escondido, Oaxaca International Airport, and 40 min. / 38 kms. from the Lagunas de Chacahua National Park. 15 min. from our location, the town of Rio Grande is located, which will serve as a supply center for food supplies as well as construction materials. The development has 20 hectares in front of the Pacific Ocean.

We are also just 30 min. away from Casa Wabi, which is the only development in the area that is characterized by a growing demand of the market toward which we are directed and to which we will add options and services in the area.

Type of project : Mixed  
Location: Rio Grande, Oaxaca Mexico  
Land area: 20 Hectares

#### HOTELIER

A total of 20 beach villas will be projected with private pools, 12 tree houses, as well as various common areas such as orchards, meditation areas

Restaurant Common pool, service areas, all this integrated with the natural context of the place.

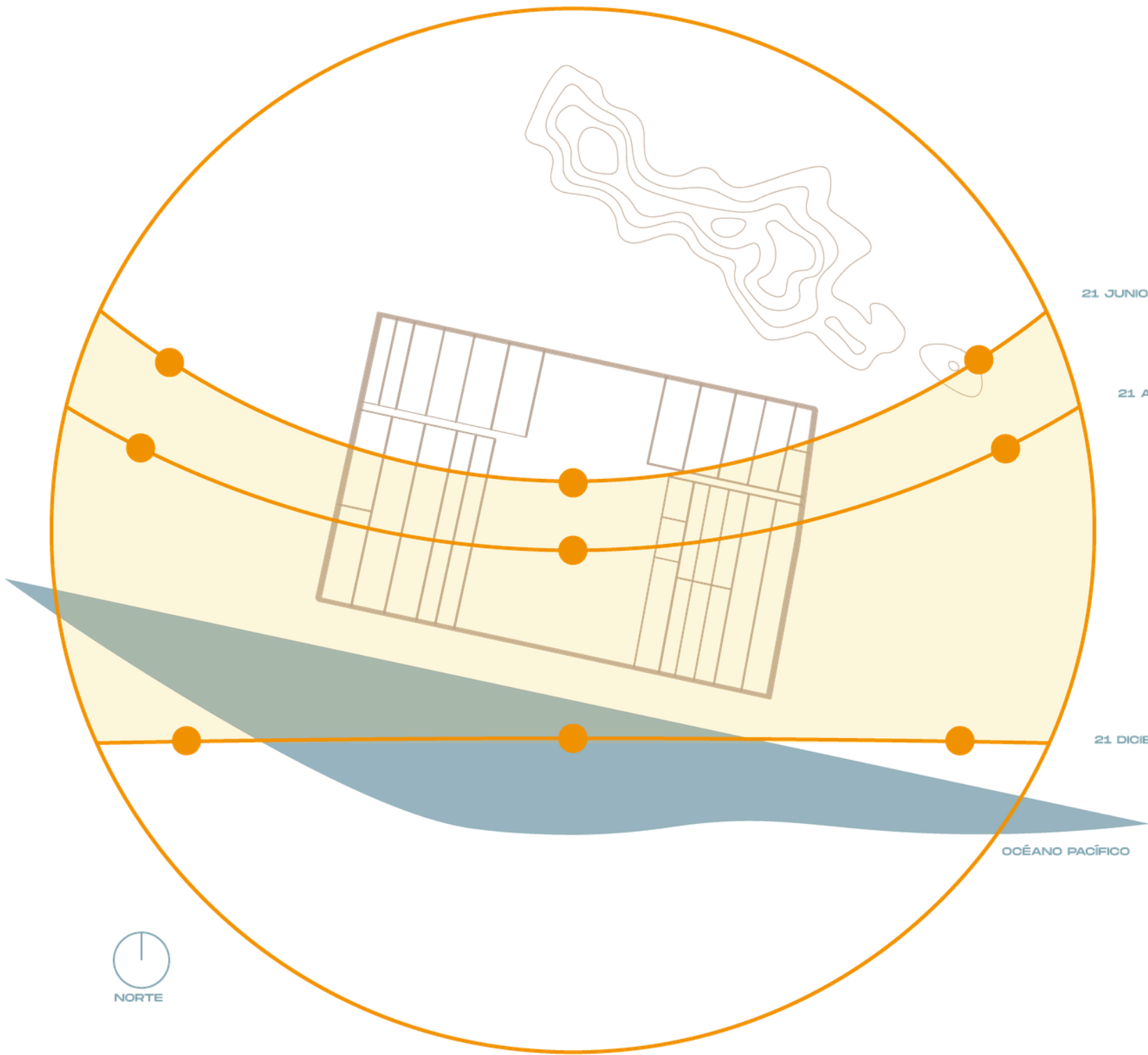
#### RESIDENTIAL

A Total of 27 residential lot

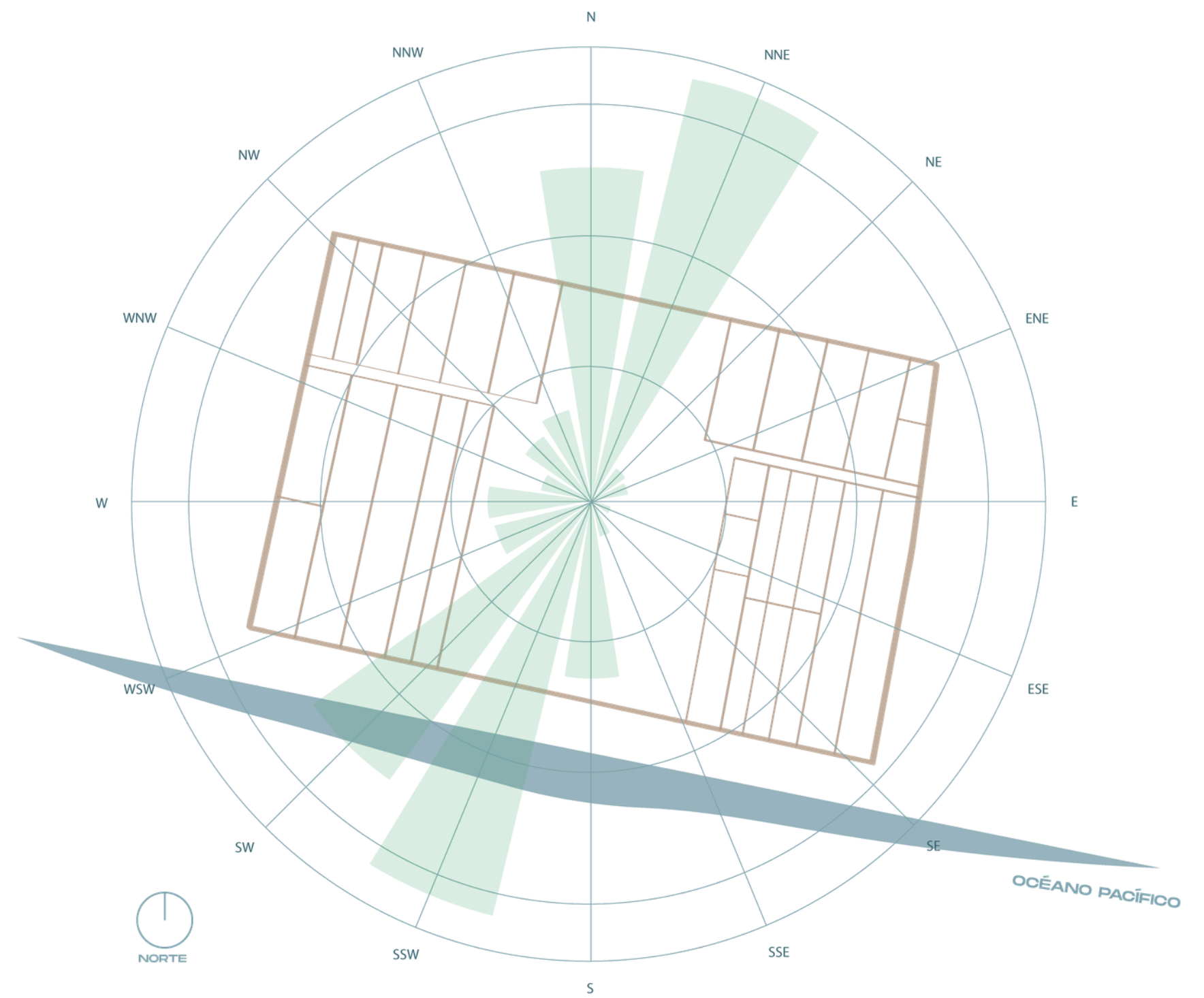


SITE ANALYSIS

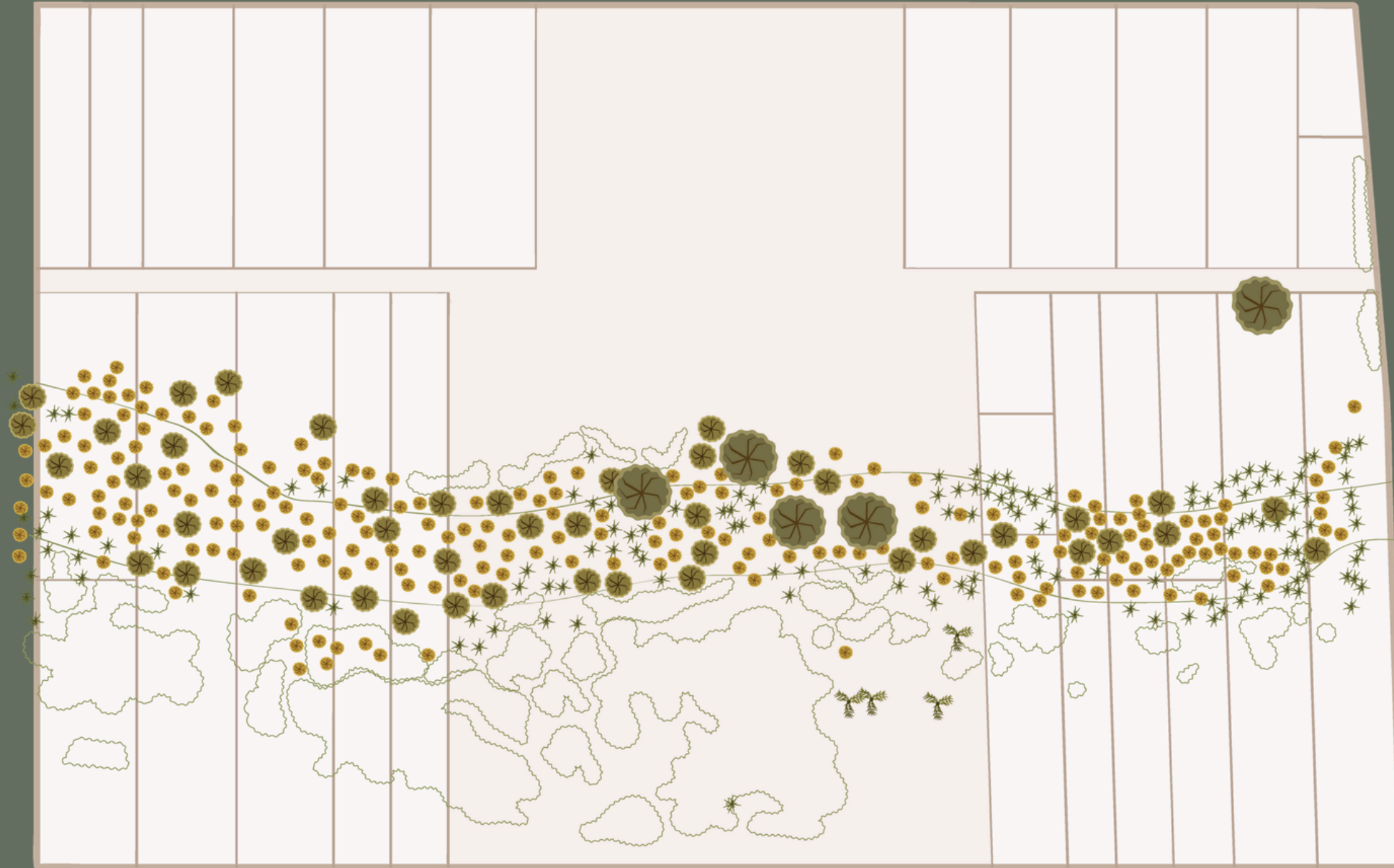
# SUNSHINE



# WINDS



70% OF THE TOTAL COS OF THE PROPERTY IS ALLOCATED TO RECREATIONAL GREEN AREAS



NORTE

**CASA SAL**  
VEGETACIÓN EXISTENTE \ SIN ESCALA



ÁRBOL +/- 99CM DE ESPESOR



ÁRBOL +/- 15CM DE ESPESOR



PALMA DE COCO



ÁRBOL +/- 30CM DE ESPESOR

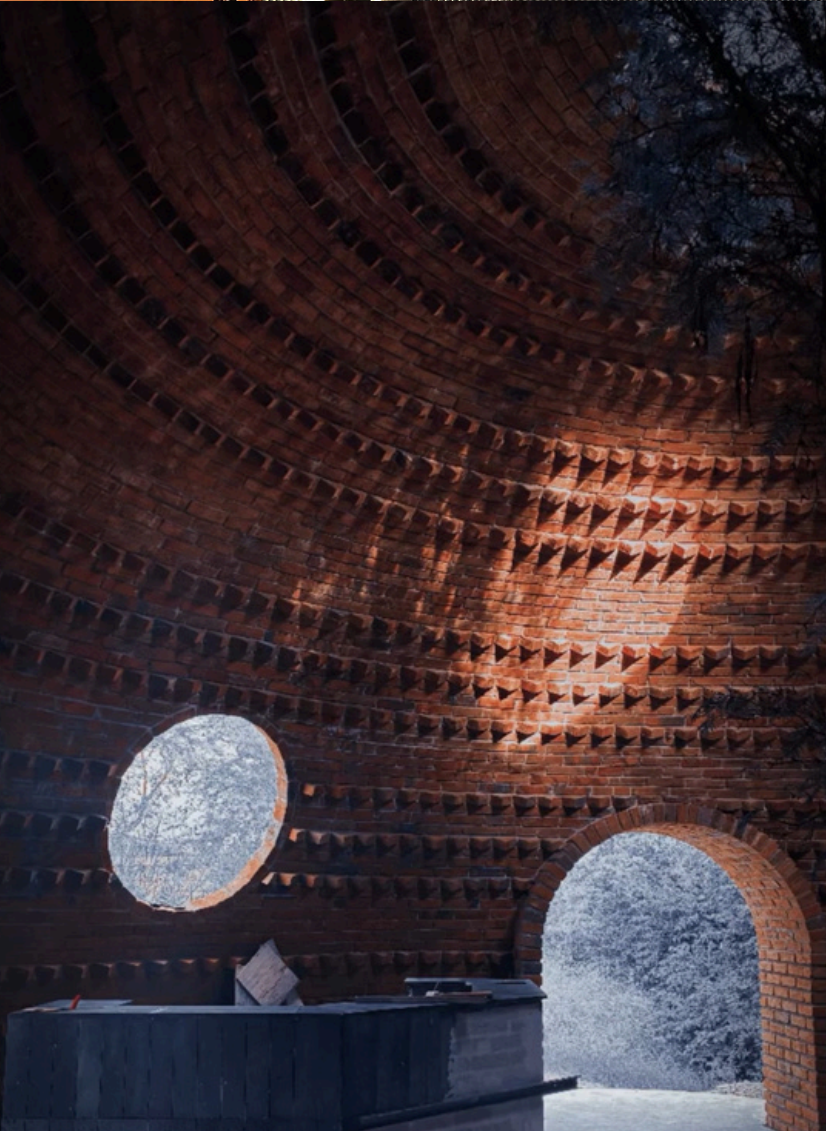


PALMERA



ARBUSTO O VEGETACIÓN ENDÉMICA

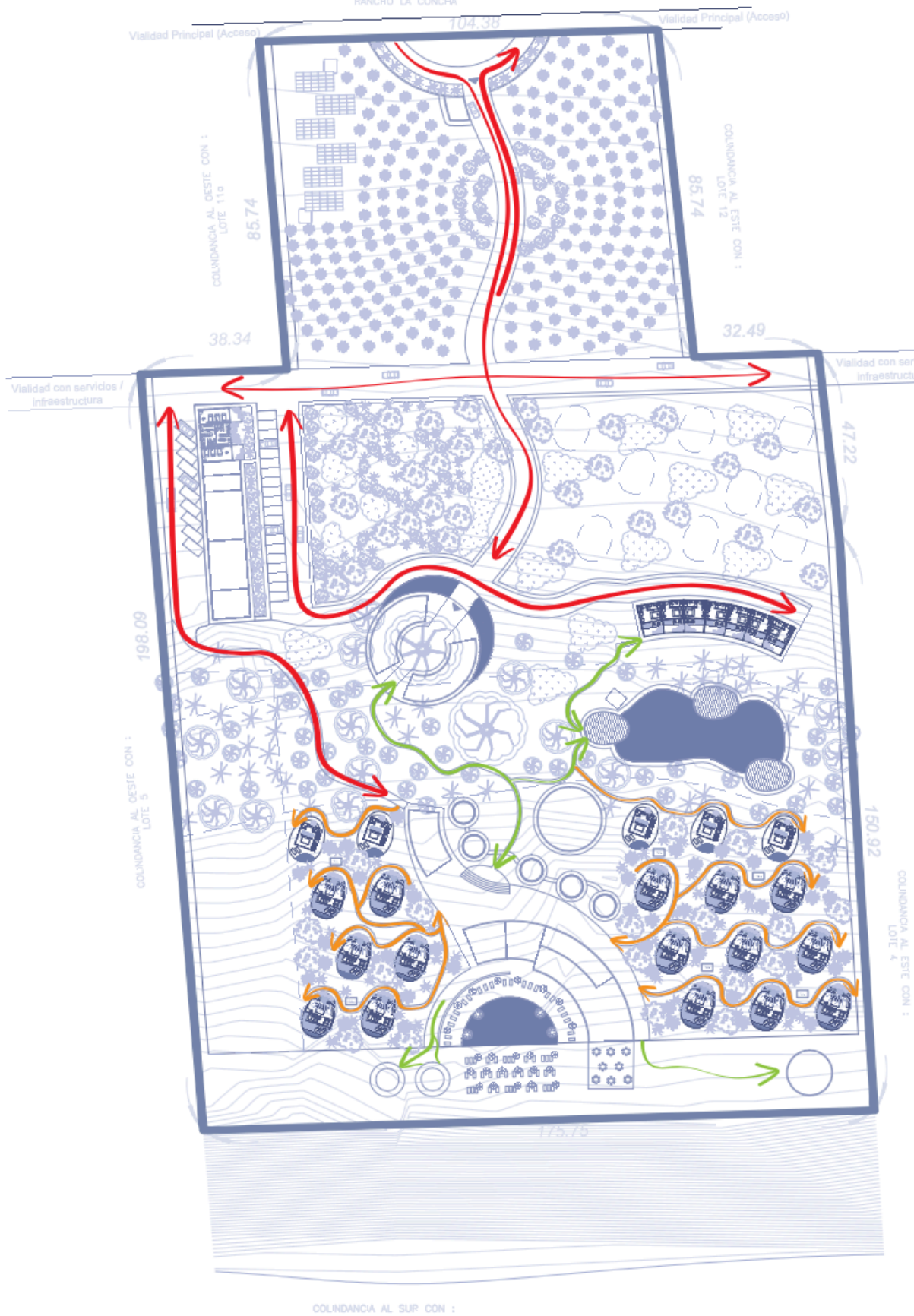




THE HOTEL



# ROADS AND MOBILITY



CASA SAL - MASTER PLAN  
CIRCULACIONES



TAAC + LIZETTE SAADIA



CASA SAL - MASTER PLAN  
ÁREAS

## ÁREAS

	PLANTÍOS DE FRUTOS	
	HUERTO	125 m <sup>2</sup>
	CUARTO DE VIGILANCIA Y CONTROL DE ACCESO	33.47 m <sup>2</sup>
	PANELES SOLARES	300 m <sup>2</sup>
	CABALLERIZAS	134.68 m <sup>2</sup>
	DORMITORIOS HOMBRES	30.00 m <sup>2</sup>
	VESTIDORES HOMBRES	22.43 m <sup>2</sup>
	DORMITORIOS MUJERES	30.00 m <sup>2</sup>
	VESTIDORES MUJERES	22.43 m <sup>2</sup>
	JARDÍN	22.00 m <sup>2</sup>
	COCINA	28.80 m <sup>2</sup>
	COMEDOR	38.40 m <sup>2</sup>
	LAVANDERÍA	127.00 m <sup>2</sup>
	ALMACÉN	122.88 m <sup>2</sup>
	CUARTO DE INSTALACIONES	70.00 m <sup>2</sup>
	ESTACIONAMIENTO CLIENTES	610.00 m <sup>2</sup>
	RECEPCIÓN, SALA DE ESPERA, BAÑOS, OFICINAS ADMINISTRATIVAS Y SALA DE CONFERENCIAS	248.80 m <sup>2</sup>
	TEINDA, CO-WORKING Y BIBLIOTECA	262.30 m <sup>2</sup>
	ESPEJO DE AGUA	122.54 m <sup>2</sup>
	LAGO	627.40 m <sup>2</sup>
	TERRAZAS LAGO	240.93 m <sup>2</sup>
	CABAÑA SERVICIOS	17.00 m <sup>2</sup>
	SPA	210.00 m <sup>2</sup>
	GYM, SALÓN DE EVENTOS, BODEGA Y DPTO.	326.28 m <sup>2</sup>
	COMEDORES	220.29 m <sup>2</sup>
	RESTAURANTE	115.57 m <sup>2</sup>
	COCINA	68.00 m <sup>2</sup>
	BAÑOS 2	47.68 m <sup>2</sup>
	BAR	60.00 m <sup>2</sup>
	JUNGLE BAR	178.00 m <sup>2</sup>
	TERRAZA	86.88 m <sup>2</sup>
	ALBERCA + ASOLEADERO	800.45 m <sup>2</sup>
	SALÓN DE YOGA Y MEDITACIÓN	110.00 m <sup>2</sup>
	FIRE PIT	124.00 m <sup>2</sup>
	VILLA TIPO A (2 NIVELES)	567.00 m <sup>2</sup>
	VILLA TIPO B (1 NIVEL)	1257.15 m <sup>2</sup>
	ÁREA DE PISCINAS (VILLA B)	75.00 m <sup>2</sup>
	VILLA TIPO C (2 NIVELES)	598.40 m <sup>2</sup>
	ÁREA DE PISCINAS (VILLA C)	25.00 m <sup>2</sup>
	VILLA TIPO TREEHOUSE (3 NIVELES)	589 m <sup>2</sup>
	ÁREA DE POLÍGONO A INTERVENIR	45,466.5 m <sup>2</sup> 100 %
	ÁREA CONSTRUIDA	7,995.65 m <sup>2</sup> 17.58 %
	CIRCULACIONES + ÁREAS VERDES	37,470.85 m <sup>2</sup> 82.42 %

# CASASAL

HOTEL & RETREAT

The Hotel plans to start its construction in March 2025, projecting its first Phase complete by Spring 2026. The Hotel includes 20 villas (master rooms) with private pool and 12 tree houses rooms, private areas, as well as amenities such as: specialty restaurants, areas of meditation, SPA, Store of local products, public pool, library and co-working space, landscapes, art installations, orchards and gardening among other amenities .

“THE HOTEL IS DEDICATED AS A HOTEL OF IMMERSIVE EXPERIENCES, WHERE LIFE IS LIVED IN HARMONY WITH NATURE AND THE SENSES”



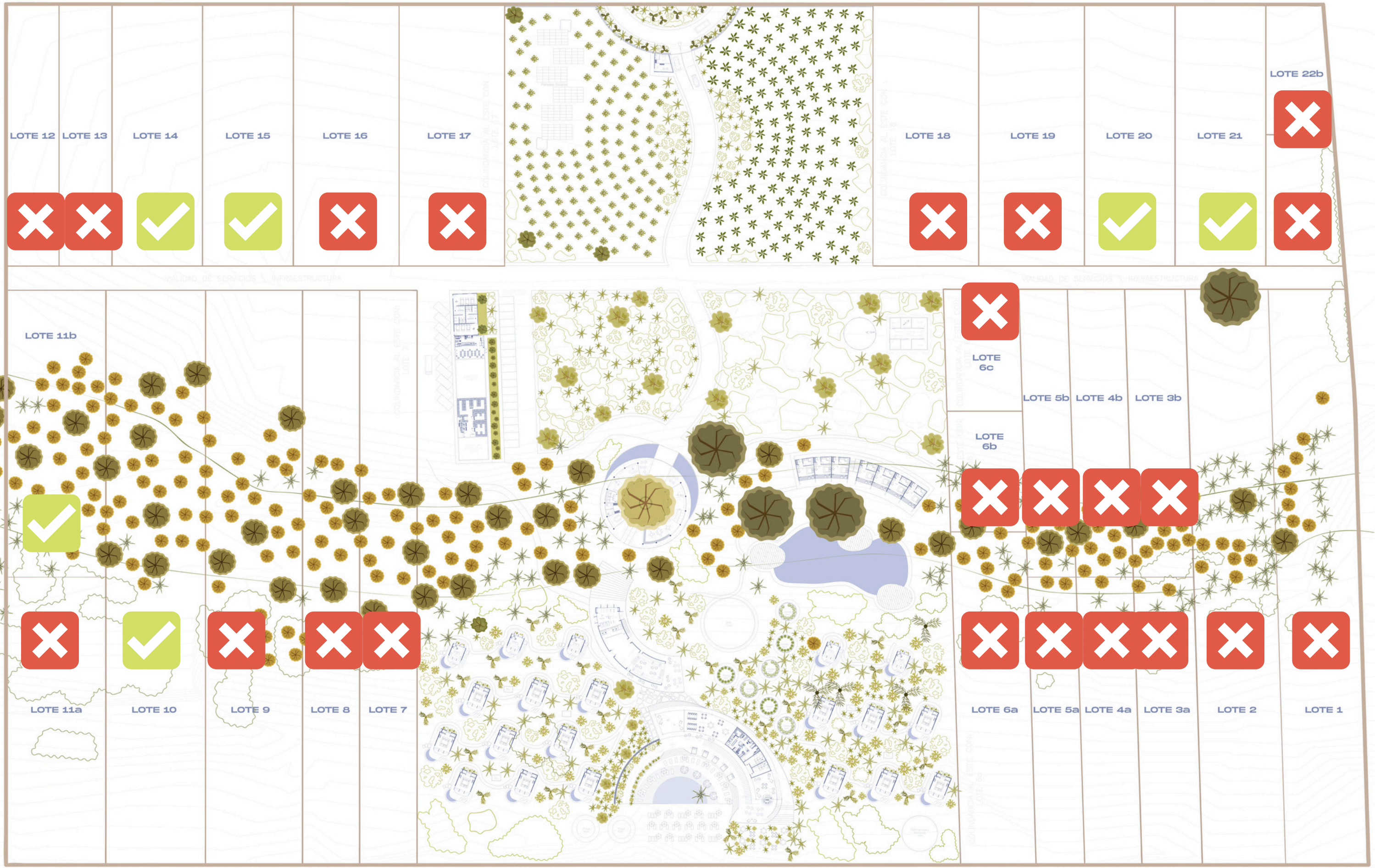
THE SERVICE PROVIDED BY THE HOTEL IS DESIGNED FOR A LIFESTYLE THAT SEEKS HIGH STANDARDS OF ATTENTION TO THE GUEST SUCH AS AMENITIES WITH GREAT DESIGN, AND PRIVACY GIVEN BY THE NATURAL ENVIRONMENT

the Ying  
To My Yang.  
the Ying  
To My Yang.

RESIDENTIAL  
AVAILABLE LOTS

4





AVAILABLE LOTS



SOLD

PACIFIC OCEAN



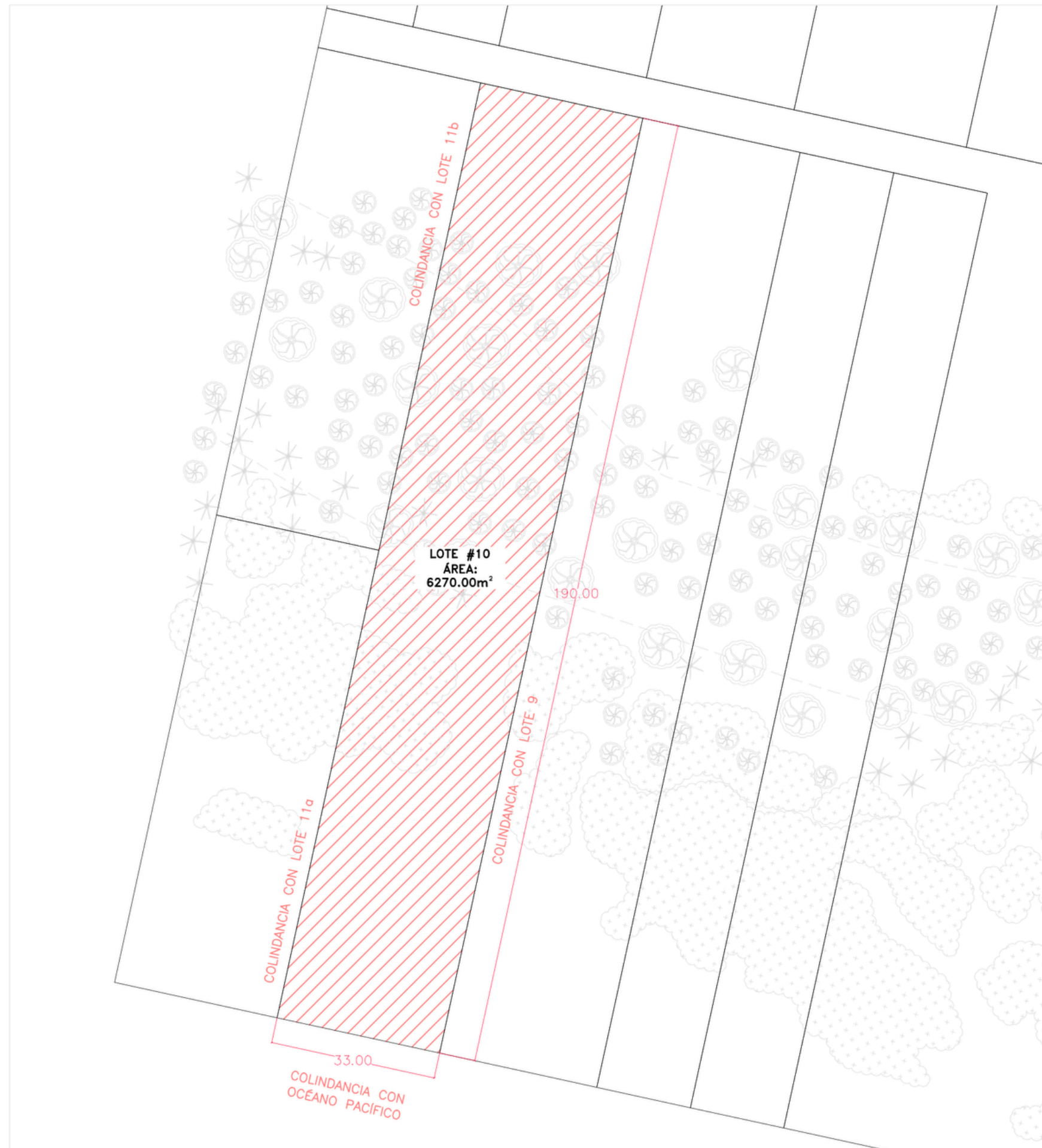
CASA SAL  
MASTER PLAN | SIN ESCALA

0 10 30 50 100

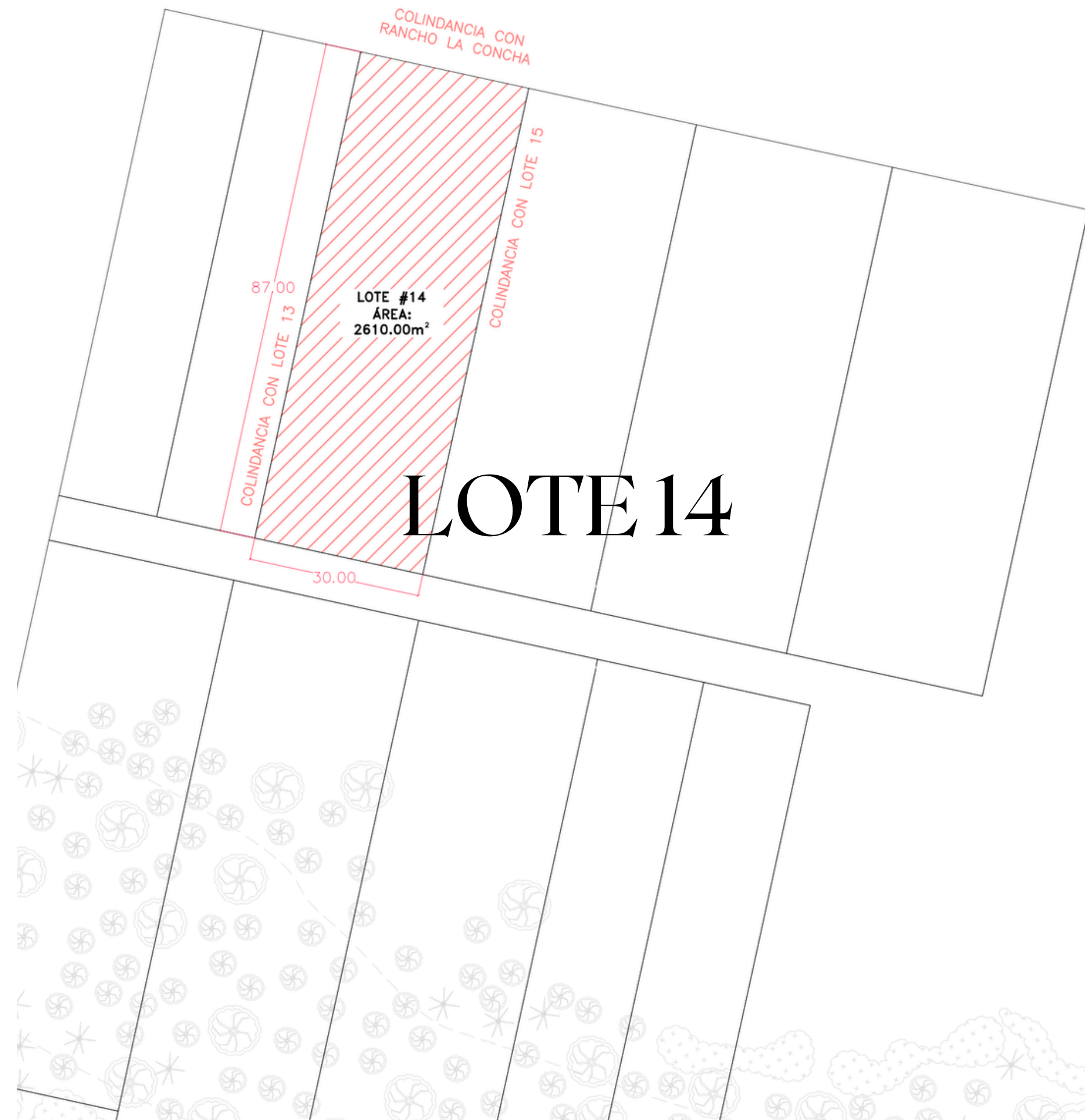
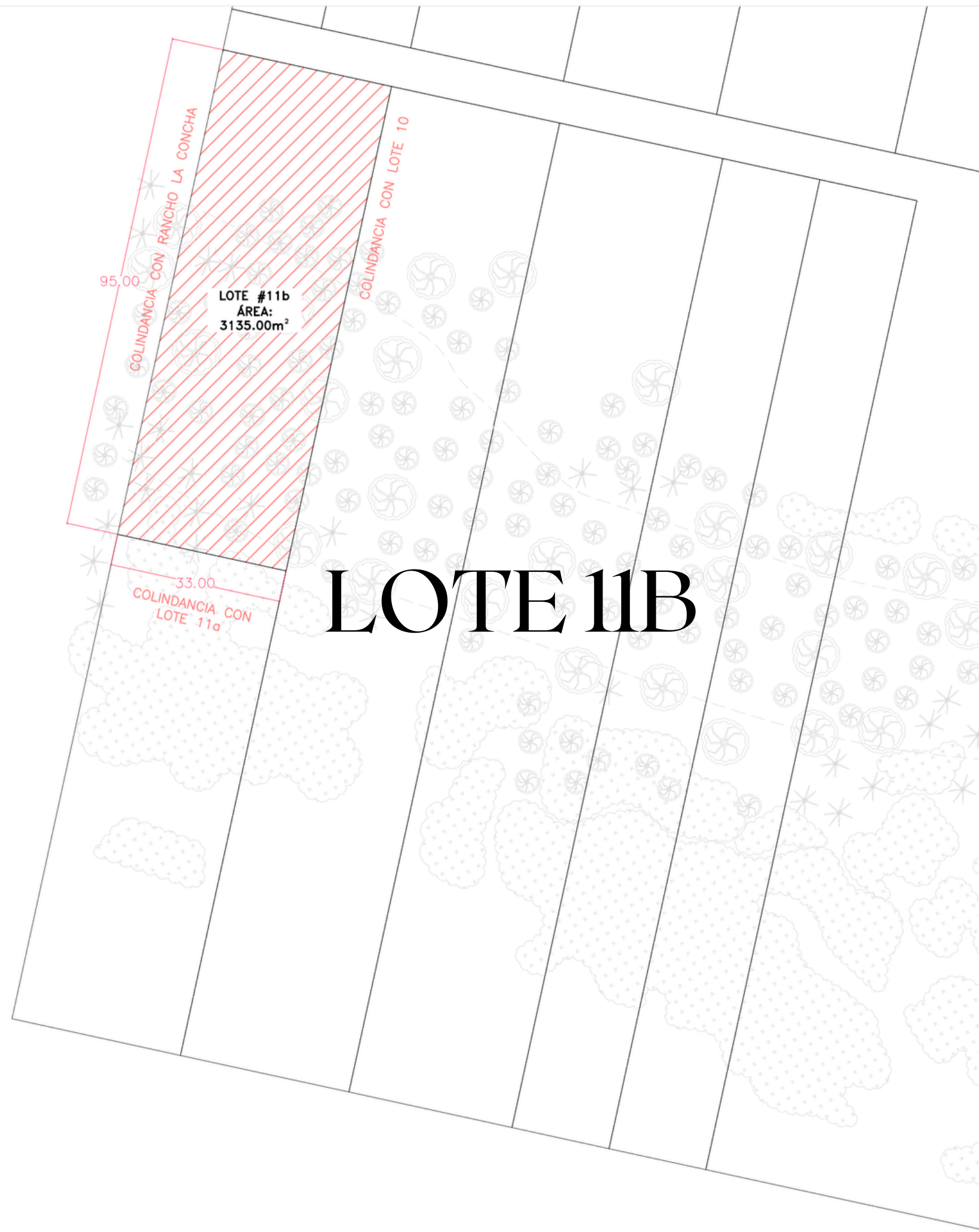
300m

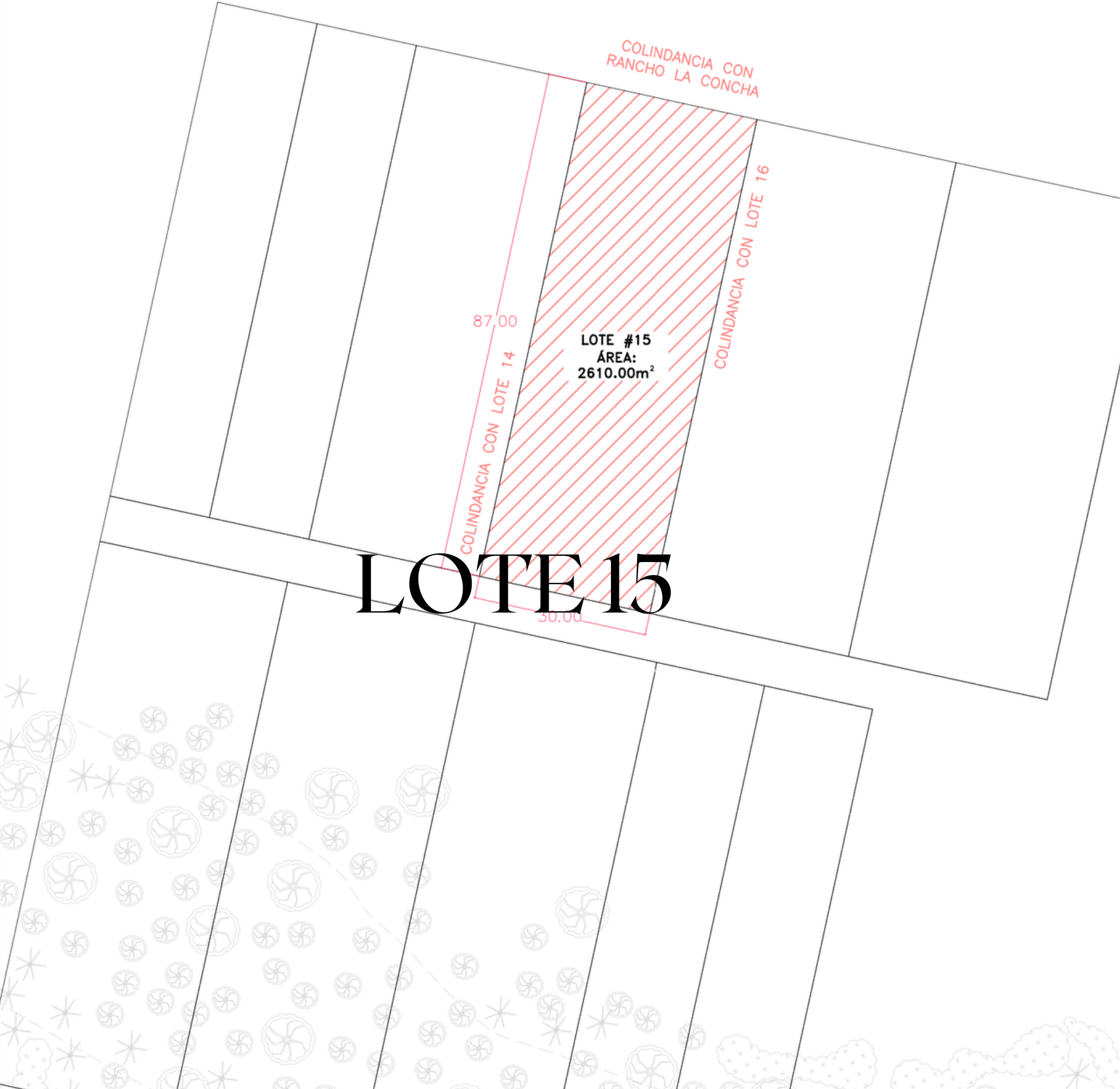
# LOTE 10

FRONT BEACH

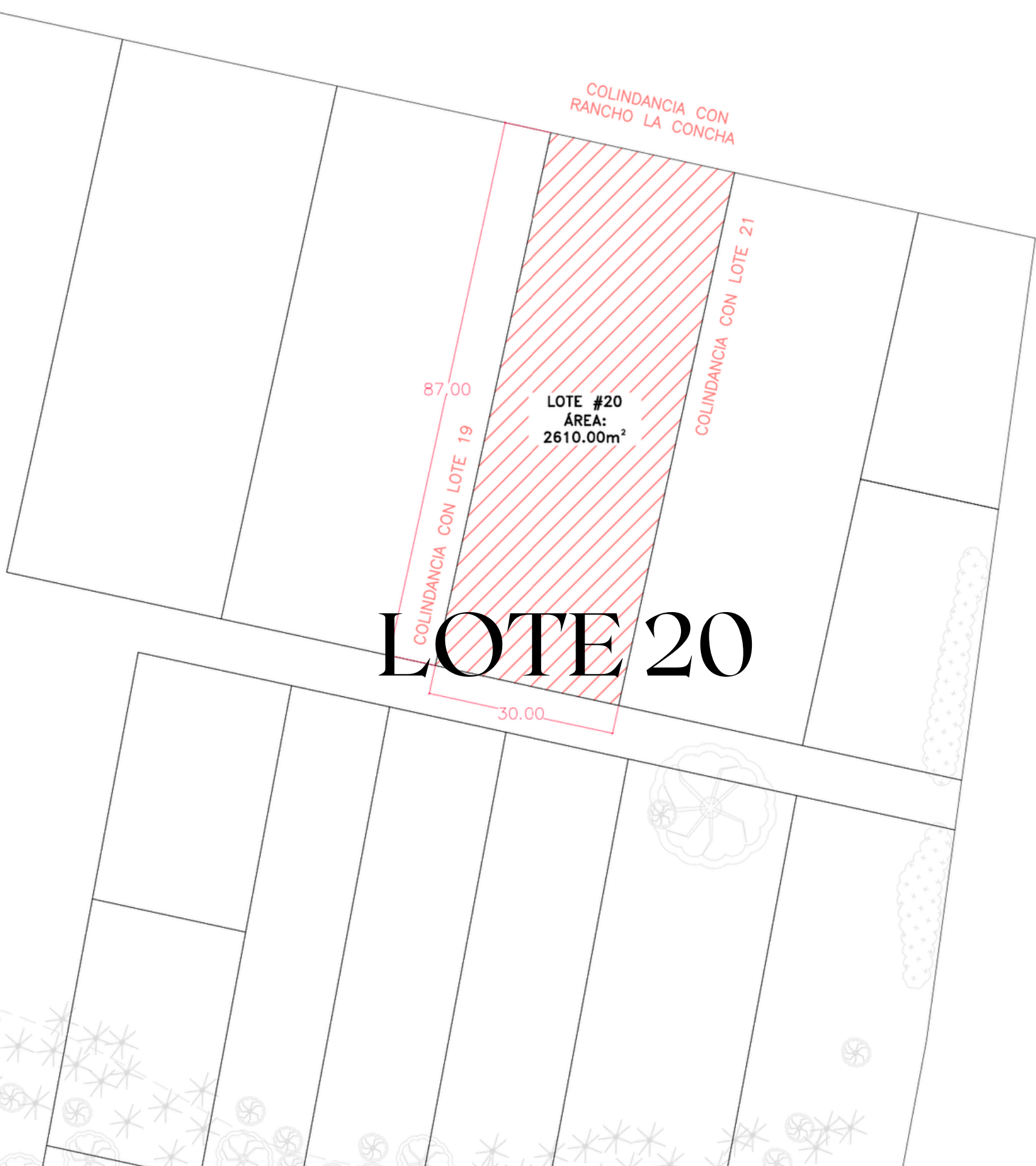


SECOND LINE

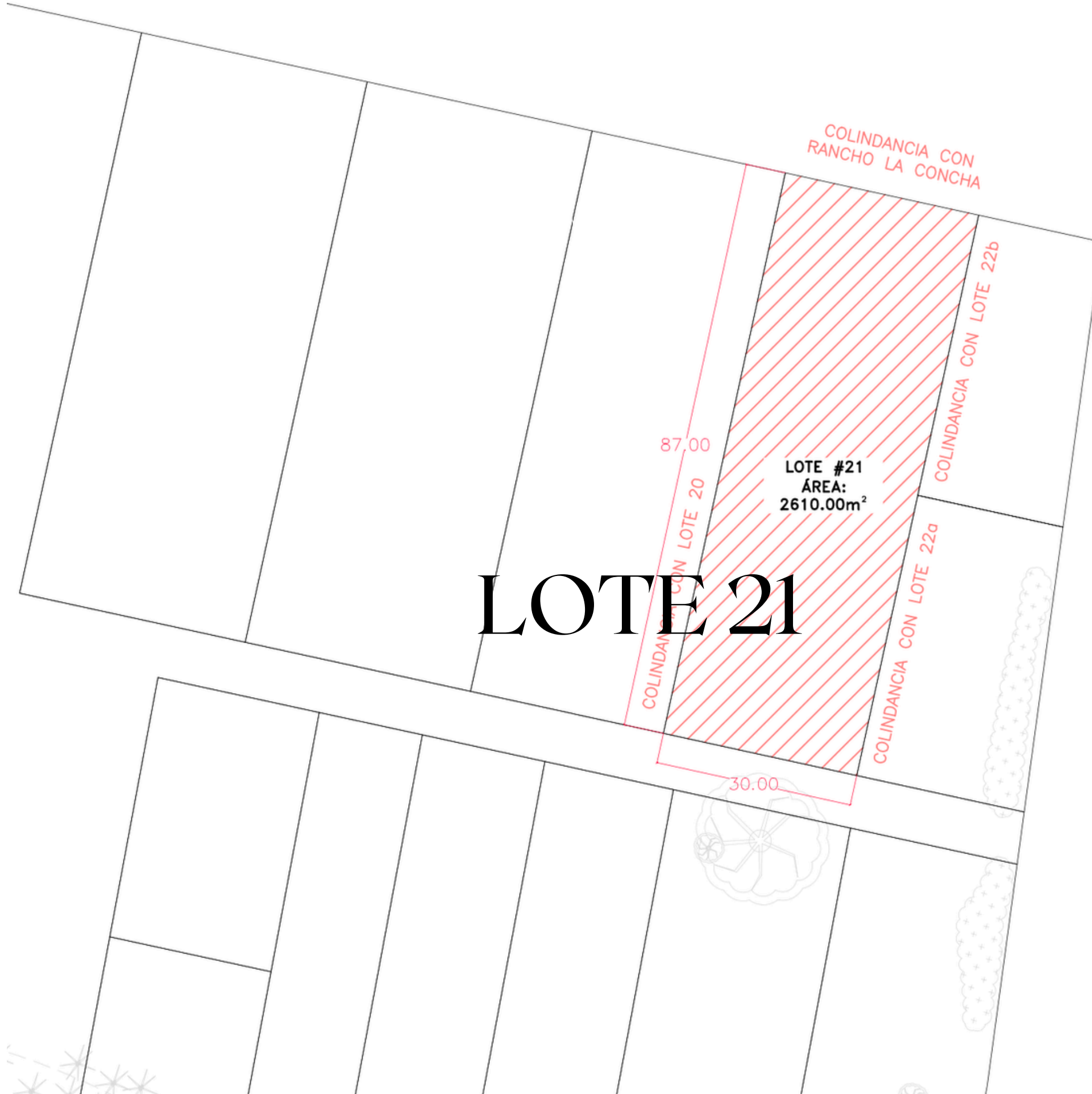




# LOTE 20

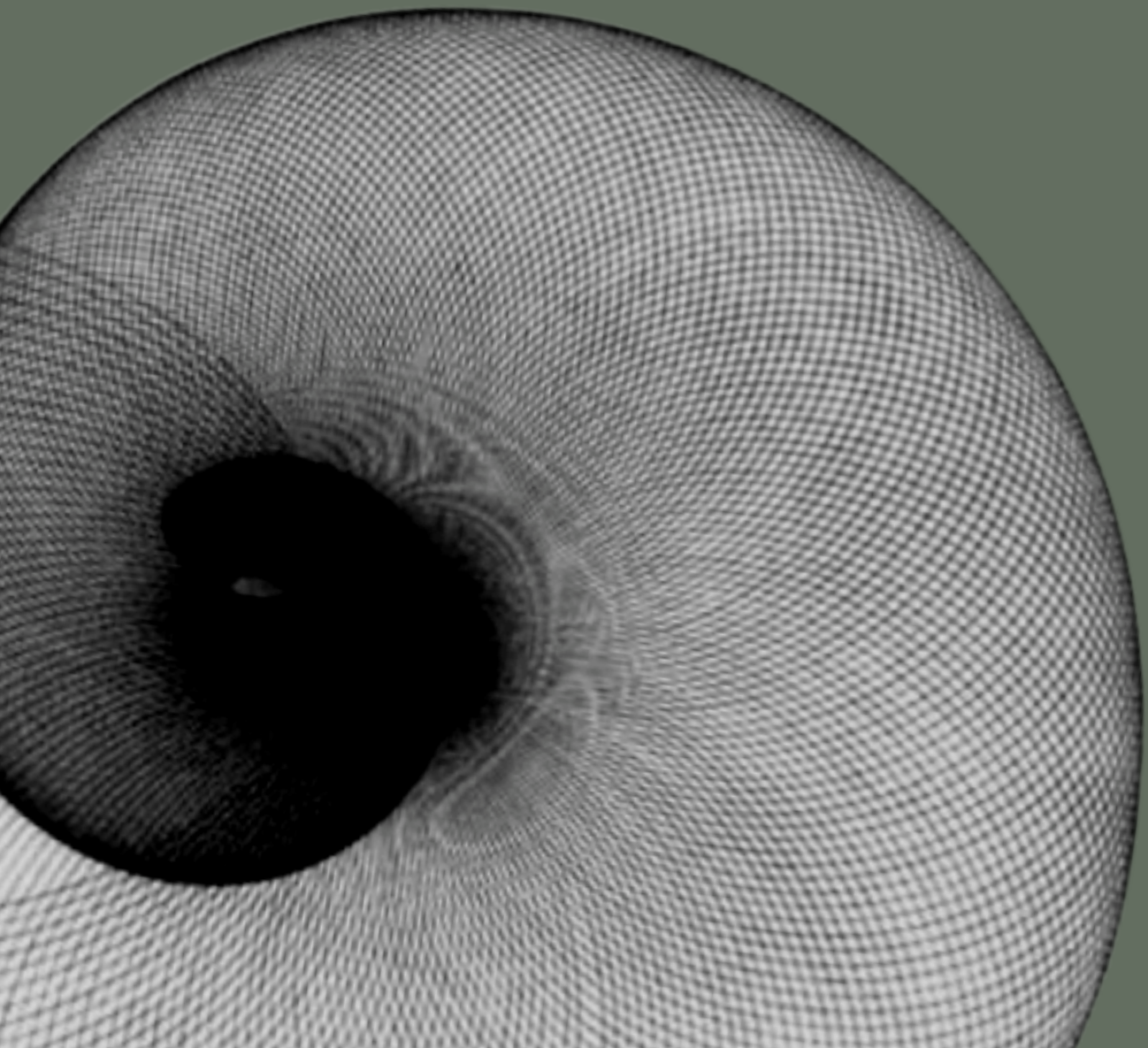


# LOTE 21



# CONSTRUCTION MATERIALS & ARCHITECTURAL COMMITTEE

Architectural Control Committee ACC will prepare a catalog of materials allowed for construction, as well as requirements and implementation of environmental technologies such as the use of Biodigesters for wastewater, environmentally friendly insecticides, among other requirements to comply with the environmental framework of the area and the concept that the Residential seeks.



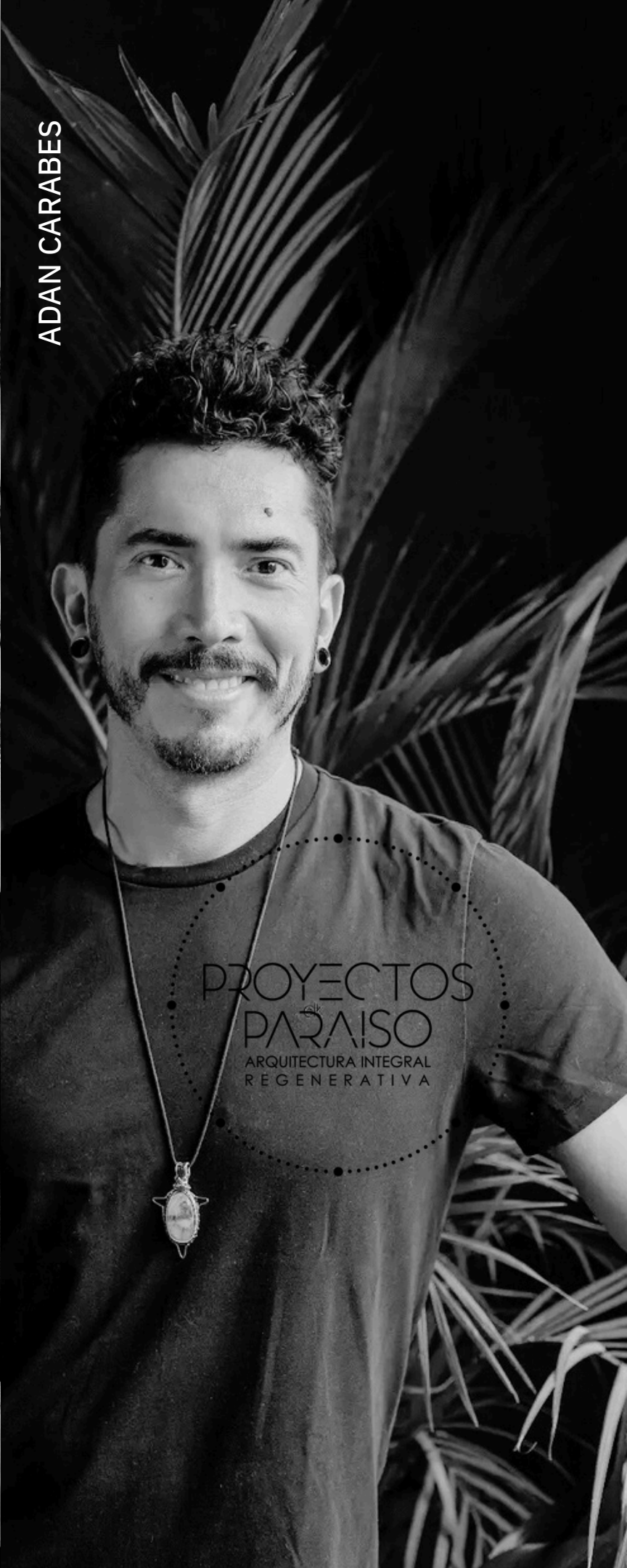
# 5



SANTIAGO BERLIN



ADAN CARABES



ADAN CARABES + PROYECTOS PARAISO

We are passionate about creating comprehensive projects that encompass everything from territorial master plans, landscaping and ecosystem regeneration, architectural design, interior design, and even the finest details of well-being, from the salt shaker on the table to the bed linens.

Our personal purpose and that of our architectural project is:

“To create well-being, beauty, and regeneration for people, the spaces they inhabit, and the Earth itself.”

LIZETTE SAADIA

We are a team of architects that seeks to question the cultural context and enhance the environment by co-creating spaces. We obsessively explore the various possibilities through excellence in design, we reinvent ourselves every time we start a new project.

RICARDO DE LA CONCHA + TAAC

TAAC is a multidisciplinary architecture workshop whose purpose is to improve people's lives by transforming spaces together.

Our mission is to design transcendental atmospheres that harmonize with the context and the environment, for the benefit of the community.

SANTIAGO BERLIN - TANGENTE ARQUITECTURA

The circle represents the complete needs of the client and of humankind; the line represents the constant evolution of architecture over time and its construction techniques; the point of tangency is the precise interaction where these needs connect with architecture and all its artistic and functional materiality.

LIZETTE SAADIA



LIZ

RICARDO DE LA CONCHA



TAAC

# MANIFEST SAL

THIS IS PROJECT SAL. A WAY TO BE PART OF A NEW AGE OF CONSCIOUSNESS. A SPACE TO RETURN TO OUR ROOTS. TO BE YOURSELF, WITHOUT MASKS. A SPACE TO LIVE WITH THE ENVIRONMENT, WITH NATURE. OPEN TO INTERNAL AND EXTERNAL DIALOGUE. WE ARE ARCHITECTS, ARTISTS, DESIGNERS, MUSICIANS, CHEFS, BUT ABOVE ALL WE ARE HUMAN, THIS IS OUR VISION OF LIFE AND SPACE THAT WE CO-CREATE FOR YOU.

